

Great North Road Solar and Biodiversity Park

Environmental Statement Volume 3, Chapter 7 Landscape and Visual Impact Assessment Figures (Part 1 of 6)

Document reference – EN010162/APP/6.3.7A

Revision number 2

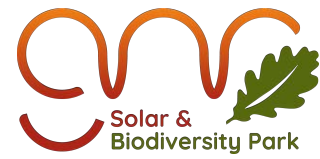
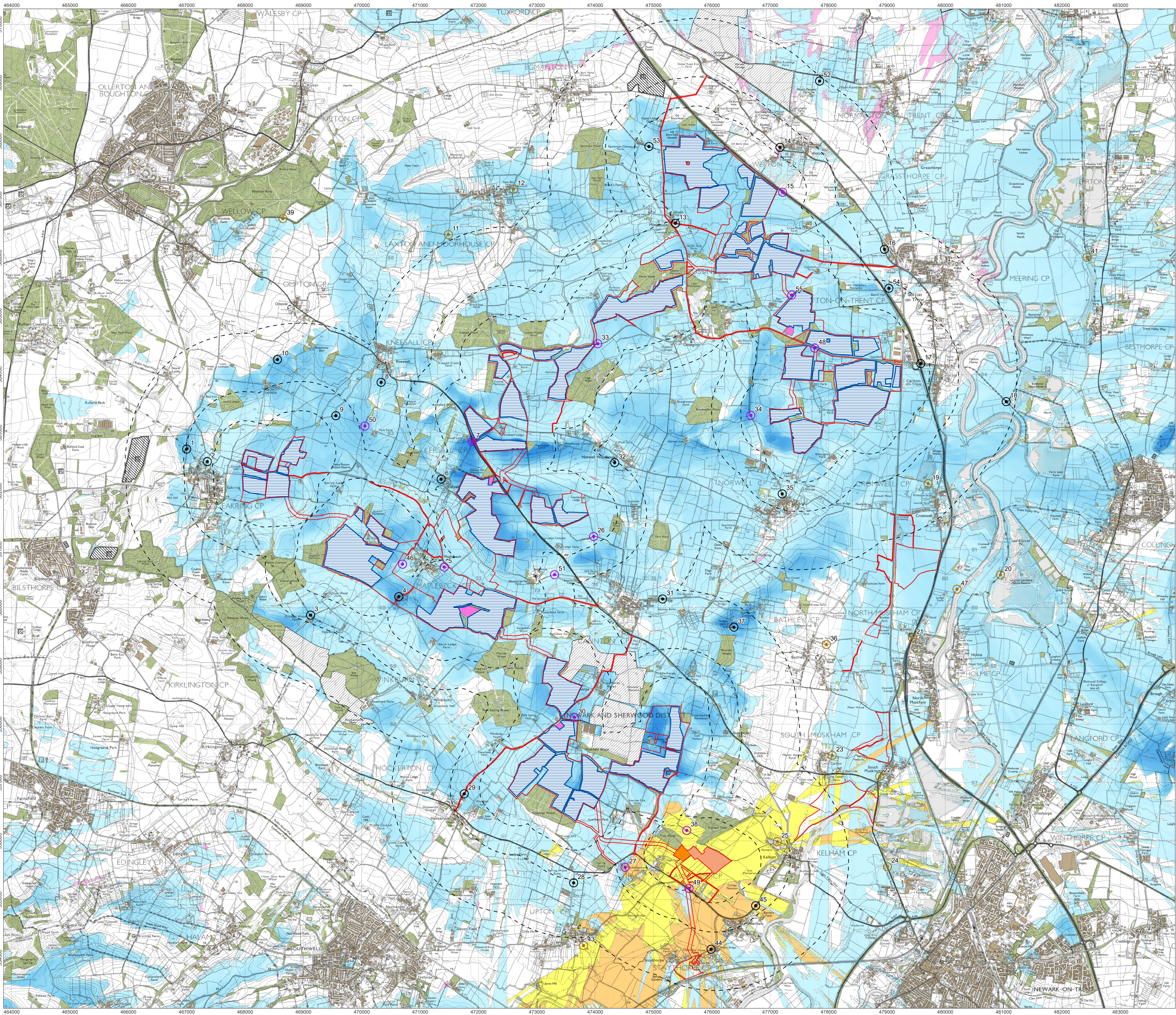
August 2025

Infrastructure Planning (Applications: Prescribed Forms and Procedure) Regulations 2009, APFP Regulation 5(2)(a)

6.3.7 ENVIRONMENTAL STATEMENT VOLUME 3, CHAPTER 7 LANDSCAPE AND VISUAL IMPACT ASSESSMENT FIGURES

<i>Revision</i>	<i>Drawing Title</i>
01	Figure 7.1 ZTV Study
01	Figure 7.2 Topography and Landcover
01	Figure 7.3 Landscape Character
01	Figure 7.4 Landscape Character and Visibility
01	Figure 7.5 Visual Receptors - Overview
01	Figure 7.6 Visual Receptors – Scale of Change Before Mitigation
01	Figure 7.7 Visual Receptors – Scale of Change After Mitigation
01	Figure 7.8 Cumulative Effects with One Earth Solar Farm
01	Figure 7.9 Cumulative Effects with Foxholes Solar Farm
01	Figure 7.10 Cumulative Effects with Kelham Solar Farm and SSE BESS
02	Figure 7.11 Visualisation Viewpoints (viewpoints 1-10, 13-18, 26-35, 37-38, 44-46, 48-55) Viewpoint 1 Robin Hood Way near Eakring Viewpoint 2 Eakring Viewpoint 3 Robin Hood Way near Orchard Wood Farm Viewpoint 4 Panoramic Viewpoint near Maplebeck Viewpoint 5 Maplebeck Viewpoint 6 Kersall Viewpoint 7 A616 near Kersall Lodge Viewpoint 8 Footpath at Kneesall Viewpoint 9 Minor Road Eakring to Kneesall Viewpoint 10 Footpath Near Leyfields Viewpoint 13 Moorhouse Viewpoint 14 B1164 Weston

<i>Revision</i>	<i>Drawing Title</i>
	Viewpoint 15 A1 Layby South of Weston
	Viewpoint 16 B1164 Sutton on Trent
	Viewpoint 17 A1 Bridge Carlton on Trent
	Viewpoint 18 Besthorpe Nature Reserve
	Viewpoint 26 Bridleway north of Caunton
	Viewpoint 27 Micklebarrow Hill
	Viewpoint 28 Local Road North of Upton
	Viewpoint 29 Hockerton
	Viewpoint 30 Footpath near Knapthorpe
	Viewpoint 31 Caunton
	Viewpoint 32 Norwell Woodhouse
	Viewpoint 33 Road West of Ossington
	Viewpoint 34 Minor Road near Park Lidget
	Viewpoint 35 Norwell
	Viewpoint 37 Footpath at Hunger Barn
	Viewpoint 38 Footpath near Flash Farm
	Viewpoint 44 Staythorpe
	Viewpoint 45 Averham
	Viewpoint 46 Footpath SW of Maplebeck
	Viewpoint 48 Ossington Road
	Viewpoint 49 A617 Layby near Flash Farm
	Viewpoint 50 Footpath near Park Farm
	Viewpoint 51 Footpath near Beesthorpe Hall
	Viewpoint 52 Footpath near Mount Pleasant Farm
	Viewpoint 53 Hagg Lane
	Viewpoint 54 Eaves Lane Sutton on Trent
	Viewpoint 55 Ossington Lane near The Grang



- Proposed Development**
- Order Limits
 - Solar Areas
 - 400 kV Substation
 - BESS
 - Intermediate Substations
- Distance from Solar Arrays, Substations and BESS Area**
- Distance from Solar Arrays, Substations and BESS Area (0.5, 1, 2 km)
- Existing Landcover**
- Buildings
 - Woodland
 - Operational Solar Farms
 - Consented Solar Farms
- Zone of Theoretical Visibility (Solar Areas at 3.5m, may also have visibility of Substations at 7.5m)**
- Greater extent visible
 - Lesser extent visible
 - Theoretical Visibility of Substations Only
 - Theoretical Visibility of BESS at 4m and/or 400 kV Substation at 14m without solar areas
 - Theoretical Visibility of 400 kV Substation and/or BESS with Solar Areas
- Viewpoints**
- Photomontage
 - Wireline
 - PEIR viewpoints omitted from ES

NOTES:
This drawing is based upon computer generated Zone of Theoretical Visibility (ZTV) studies produced using the Viewshed routine in the Visibility Analysis plugin for QGIS. The areas shown are the maximum theoretical visibility, taking into account topography, principal woodlands and buildings.

A digital surface model (DSM) has been derived from 10m Composite LiDAR DTM height data with the locations of woodland and buildings taken from the OS Open Map Local dataset. Buildings have been modelled with an assumed height of 7.5m and woodland an assumed height of 15m, representing a conservative estimate of average heights within the study area.

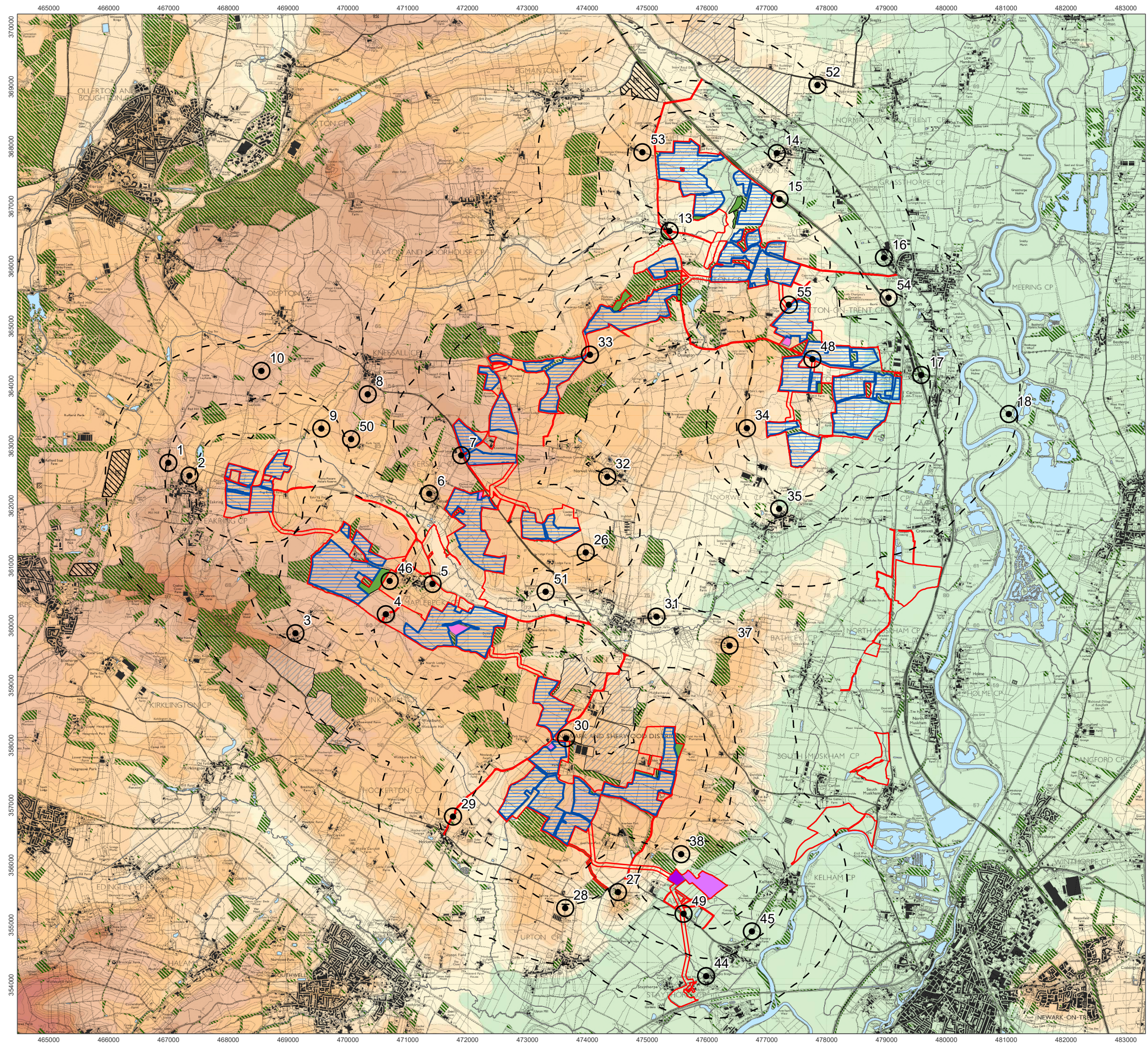
The model does not take into account some localised features such as small copses, hedgerows or individual trees and therefore still gives an exaggerated impression of the extent of visibility. The actual extent of visibility on the ground will be less than that suggested by this plan.

The ZTV includes an adjustment that allows for Earth's curvature and light refraction. It is based on a derived DSM and has a 10m² resolution.

1:31,000 Scale @ A1
0 0.5 1 2 km
ABS-0014-001 v1 Date: 24/06/2025

**ZTV Study
Figure 7.1**

**Great North Road Solar and
Biodiversity Park
Environmental Statement**



Proposed Development

- Order Limits
- Solar Areas
- 400 kV Substation
- BESS
- Intermediate Substations
- Proposed Woodland
- Distance from Solar Arrays, Substations and BESS Area (0.5, 1, 2 km)
- Viewpoints

Landcover

- Buildings
- Woodland
- Water
- Operational Solar Farms
- Consented Solar Farms

Elevation (AOD)

- | | |
|-------------|-----------|
| 151 - 160 m | 61 - 70 m |
| 141 - 150 m | 51 - 60 m |
| 131 - 140 m | 41 - 50 m |
| 121 - 130 m | 31 - 40 m |
| 111 - 120 m | 21 - 30 m |
| 101 - 110 m | 11 - 20 m |
| 91 - 100 m | 1 - 10 m |
| 81 - 90 m | <0 m |
| 71 - 80 m | |

1:62,000 Scale @ A3

0 0.5 1 2 km

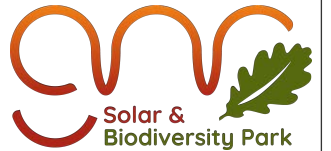
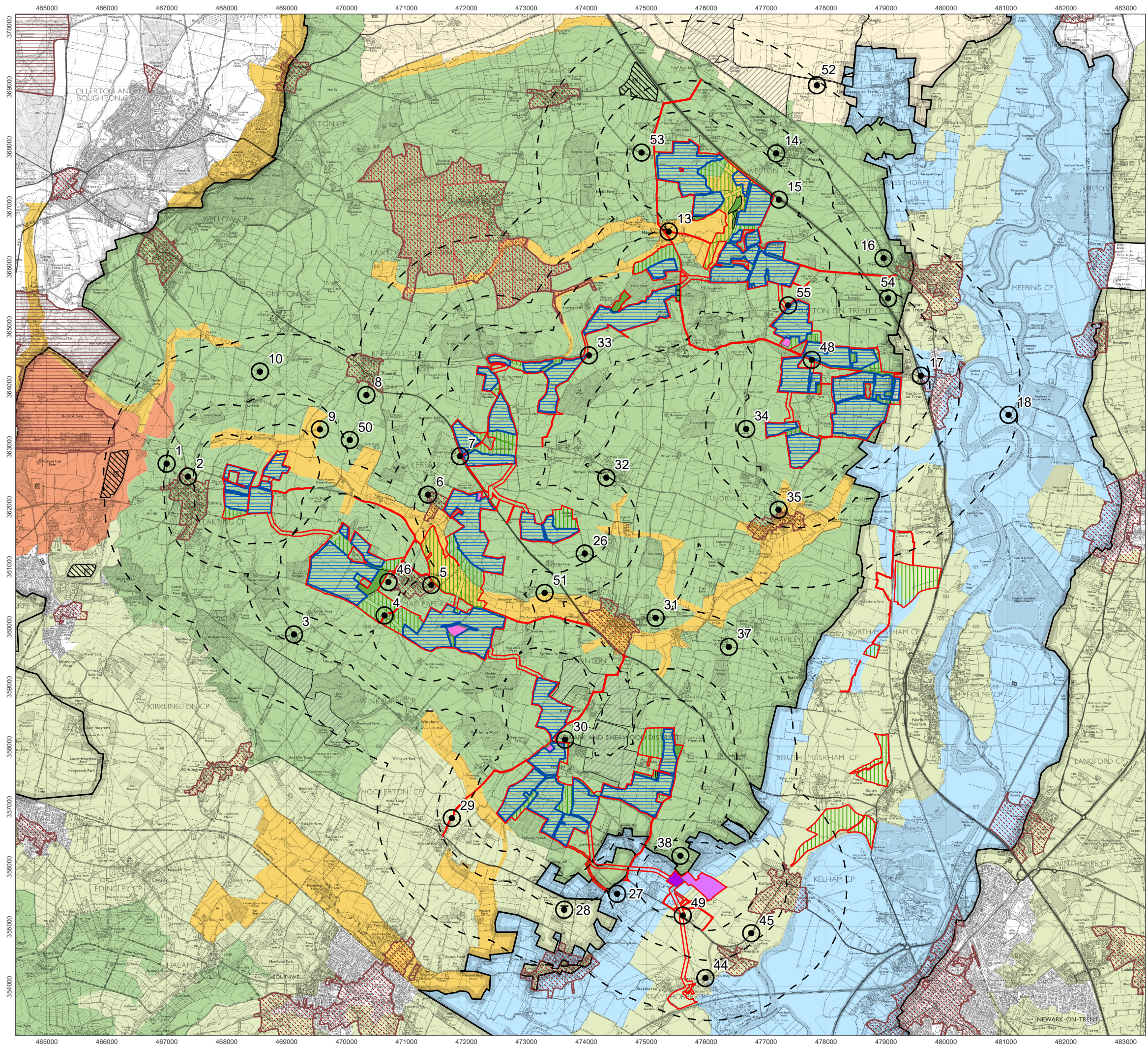


ABS-0014-002 v1

Date: 24/06/2025

Topography and Landcover Figure 7.2

Great North Road Solar and Biodiversity Park Environmental Statement



Proposed Development

- Order Limits
- Solar Areas
- 400 kV Substation
- BESS
- Intermediate Substations
- Proposed Woodland
- Proposed Ecological Mitigation
- Distance from Solar Arrays, Substations and BESS Area (0.5, 1, 2 km)
- Viewpoints
- Operational Solar Farms
- Consented Solar Farms

Landscape Character

- Regional Character Areas
- Newark & Sherwood Landscape Character Types
 - Estate Farmlands with Plantations
 - Meadowlands
 - River Meadowlands
 - Village Farmlands
 - Village Farmlands with Ancient Woodlands
- Bassetlaw Landscape Character Types
 - Mid Nottinghamshire Farmlands

Contextual Heritage Designations

- Newark and Sherwood Conservation Areas
- Historic Landscape around Laxton
- Registered Parks and Gardens

1:62,000 Scale @ A3

0 0.75 1.5 3 km

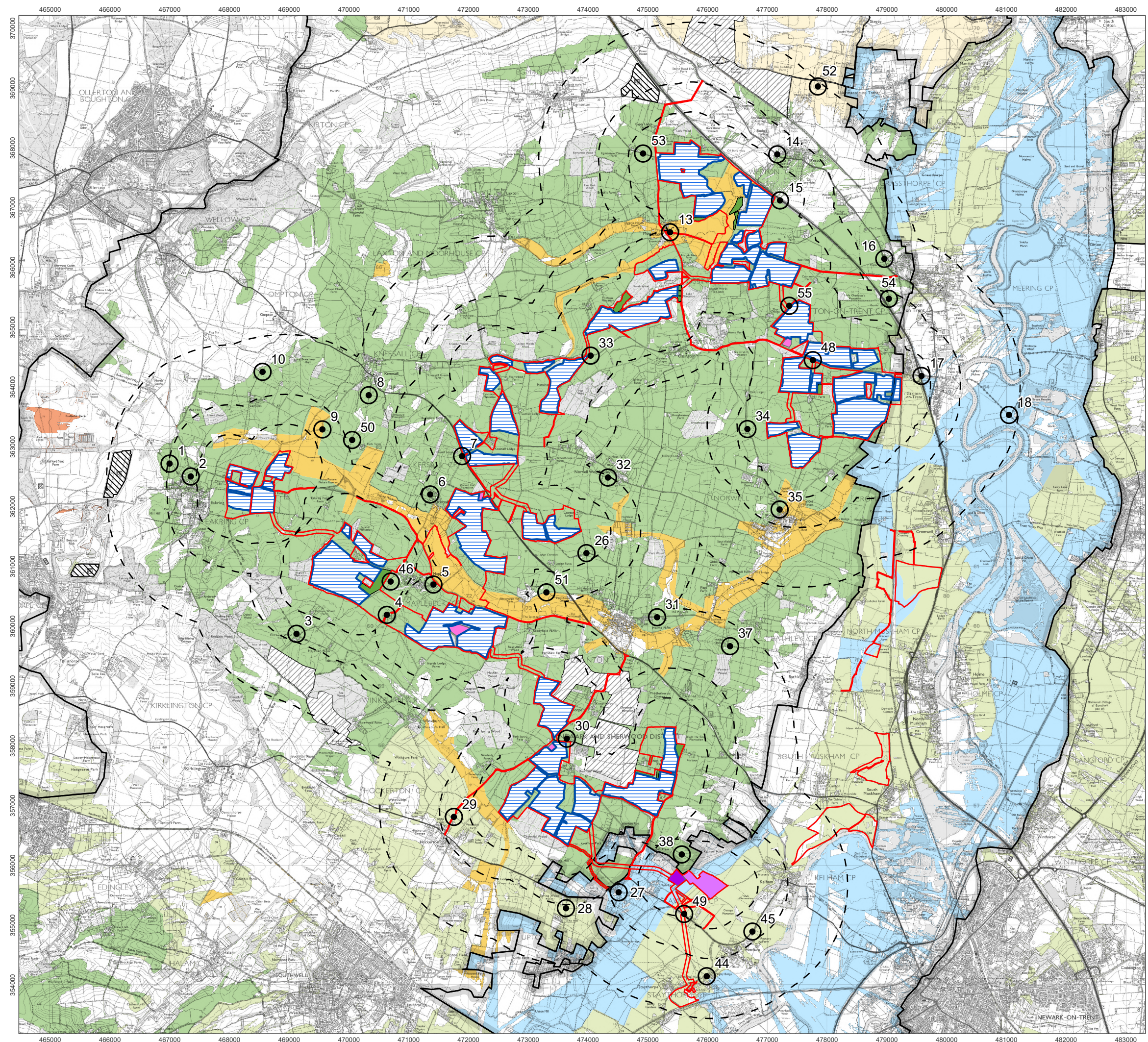


ABS-0014-003 v1

Date: 25/06/2025

Landscape Character Figure 7.3

Great North Road Solar and Biodiversity Park Environmental Statement



Proposed Development

- Order Limits
- Solar Areas
- 400 kV Substation
- BESS
- Intermediate Substations
- Proposed Woodland
- Distance from Solar Arrays, Substations and BESS Area (0.5, 1, 2 km)
- Viewpoints
- Operational Solar Farms
- Consented Solar Farms

Landscape Character

- Regional Character Areas
- Newark & Sherwood Landscape Character Types
 - Estate Farmlands with Plantations
 - Meadowlands
 - River Meadowlands
 - Village Farmlands
 - Village Farmlands with Ancient Woodlands
- Bassetlaw Landscape Character Types
 - Mid Nottinghamshire Farmlands

1:62,000 Scale @ A3

0 0.75 1.5 3 km

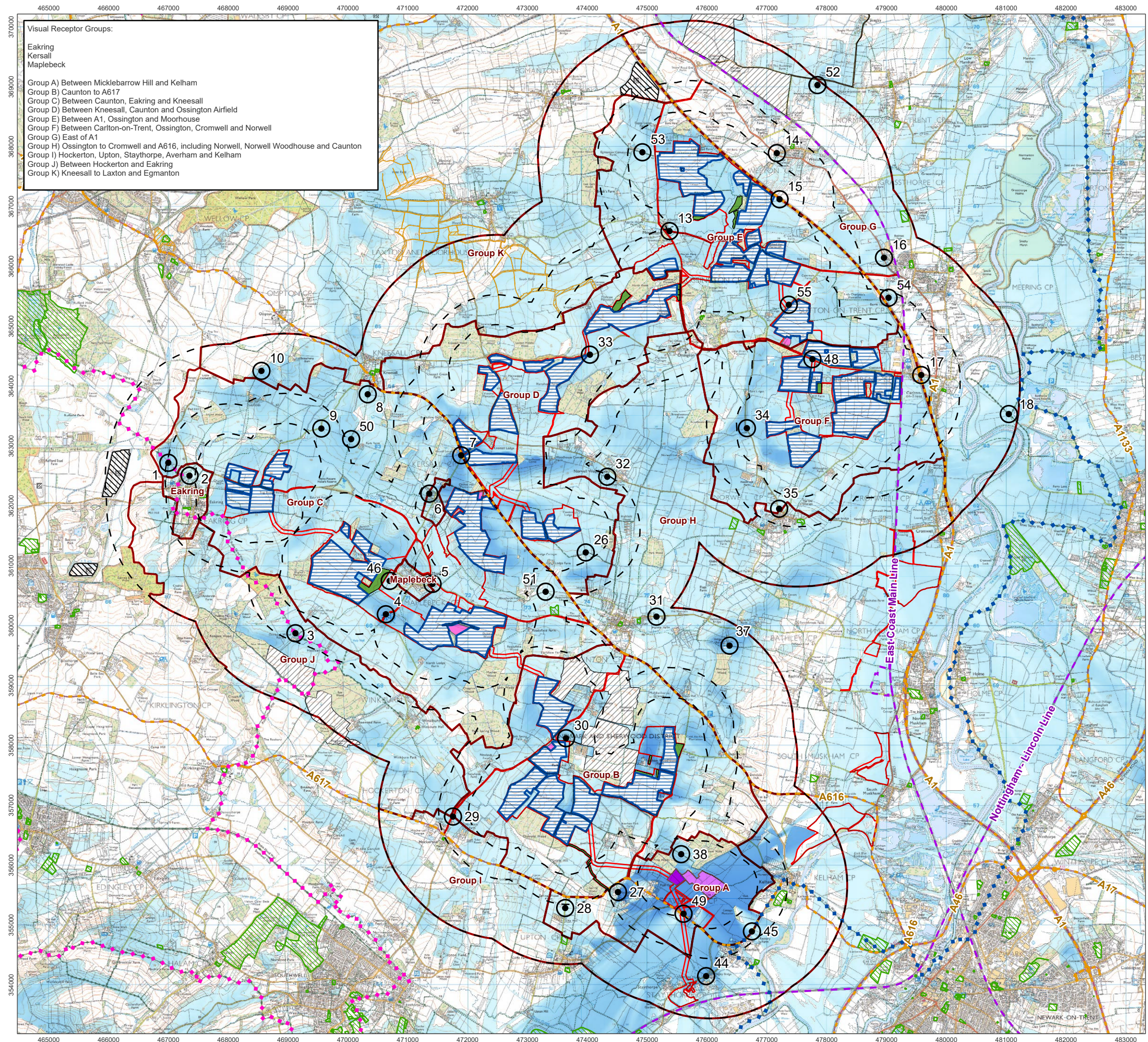


ABS-0014-004 v1

Date: 25/06/2025

Landscape Character and Visibility Figure 7.4

Great North Road Solar and Biodiversity Park Environmental Statement



- Proposed Development**
- Solar Areas
 - 400 kV Substation
 - BESS
 - Intermediate Substations
 - Proposed Woodland
 - Order Limits
 - Distance from Solar Arrays, Substations and BESS Area (0.5, 1, 2 km)
 - Viewpoints
 - Visual Receptor Groups
 - Open Green Space
 - CRoW Open Access Land
- Long Distance Routes**
- Robin Hood Way
 - Trent Valley Way
- Key Transport Routes**
- A Roads
 - Main Railway Lines
 - National Cycle Routes
- Zone of Theoretical Visibility (All Combined)**
- Greater extent visible
 - Lesser extent visible

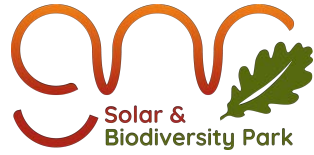
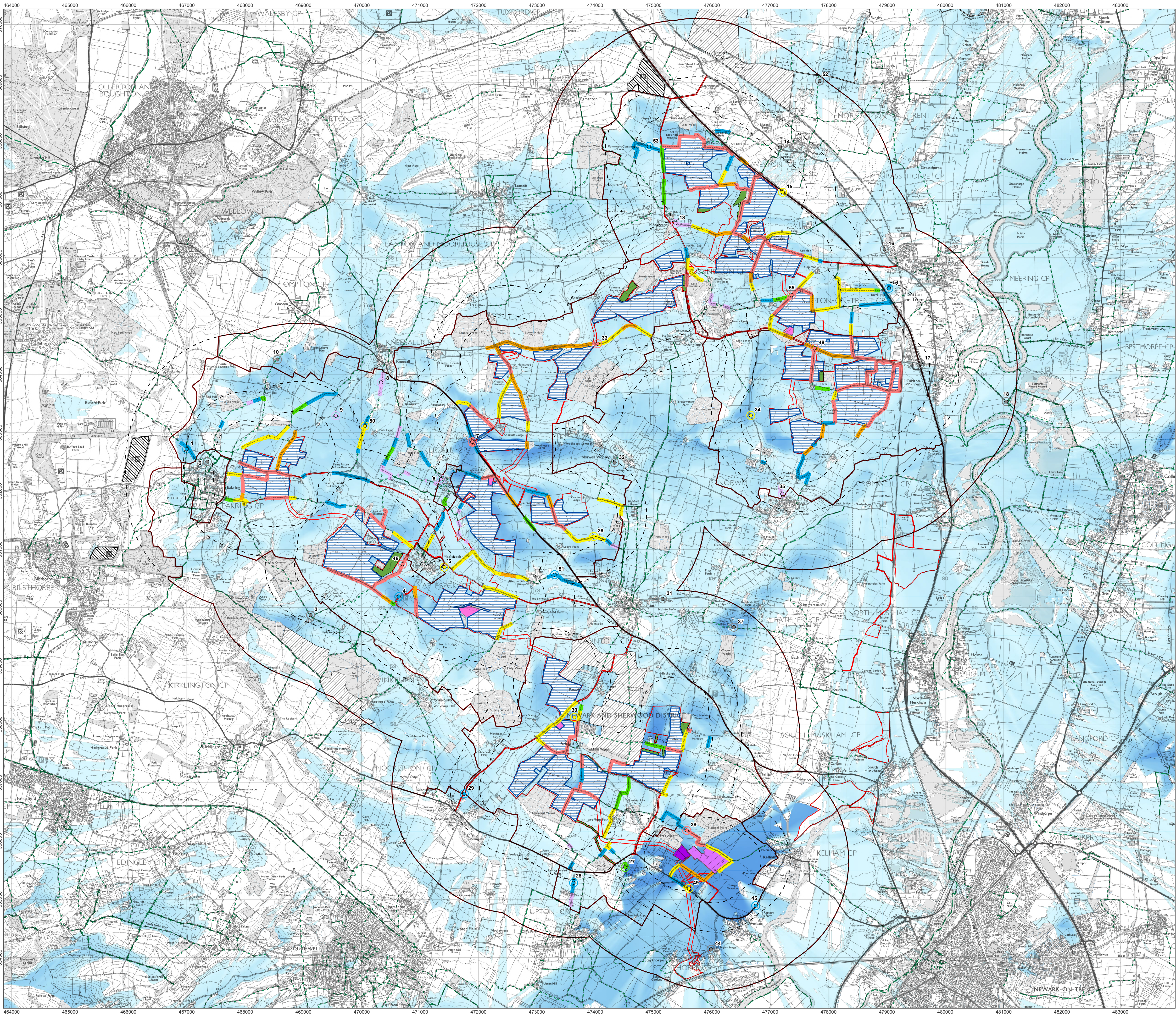
1:62,000 Scale @ A3

0 0.75 1.5 3 km

ABS-0014-005 v1 Date: 25/06/2025

Visual Receptors - Overview
Figure 7.5

Great North Road Solar and Biodiversity Park
Environmental Statement

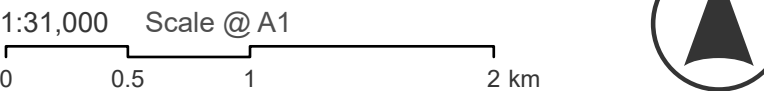


- Proposed Development**
- Solar Areas
 - 400 kV Substation
 - BESS
 - Intermediate Substations
 - Proposed Woodland
 - Order Limits
 - Distance from Solar Arrays, Substations and BESS Area (0.5, 1, 2 km)
 - Visual Receptor Groups
 - Operational Solar Farms
 - Consented Solar Farms
- Public Rights of Way**
- Footpath
 - Bridleway
 - BOAT
 - Restricted Byway
- Viewpoint Scale of Change (Before Mitigation)**
- Large
 - Large/medium
 - Medium
 - Medium/small
 - Small
 - Small/negligible
 - Negligible
- PRoW Scale of Change (Before Mitigation)**
- Large
 - Large/medium
 - Medium
 - Medium/small
 - Small
 - Small/negligible
- Zone of Theoretical Visibility (All Combined)**
- Greater extent visible
 - Lesser extent visible

NOTES:
The scale of change provides an approximation of the extent and location of views; in reality effects on site may change more gradually (e.g. as a route moves closer to part of the Development in open view) or abruptly (e.g. where the route moves around a woodland and the Development becomes visible).

Where views are mostly screened, but there are occasional open views through field gates or openings, these isolated views are not shown unless they are illustrated by a viewpoint. However, they are described fully within the text.

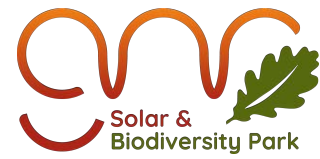
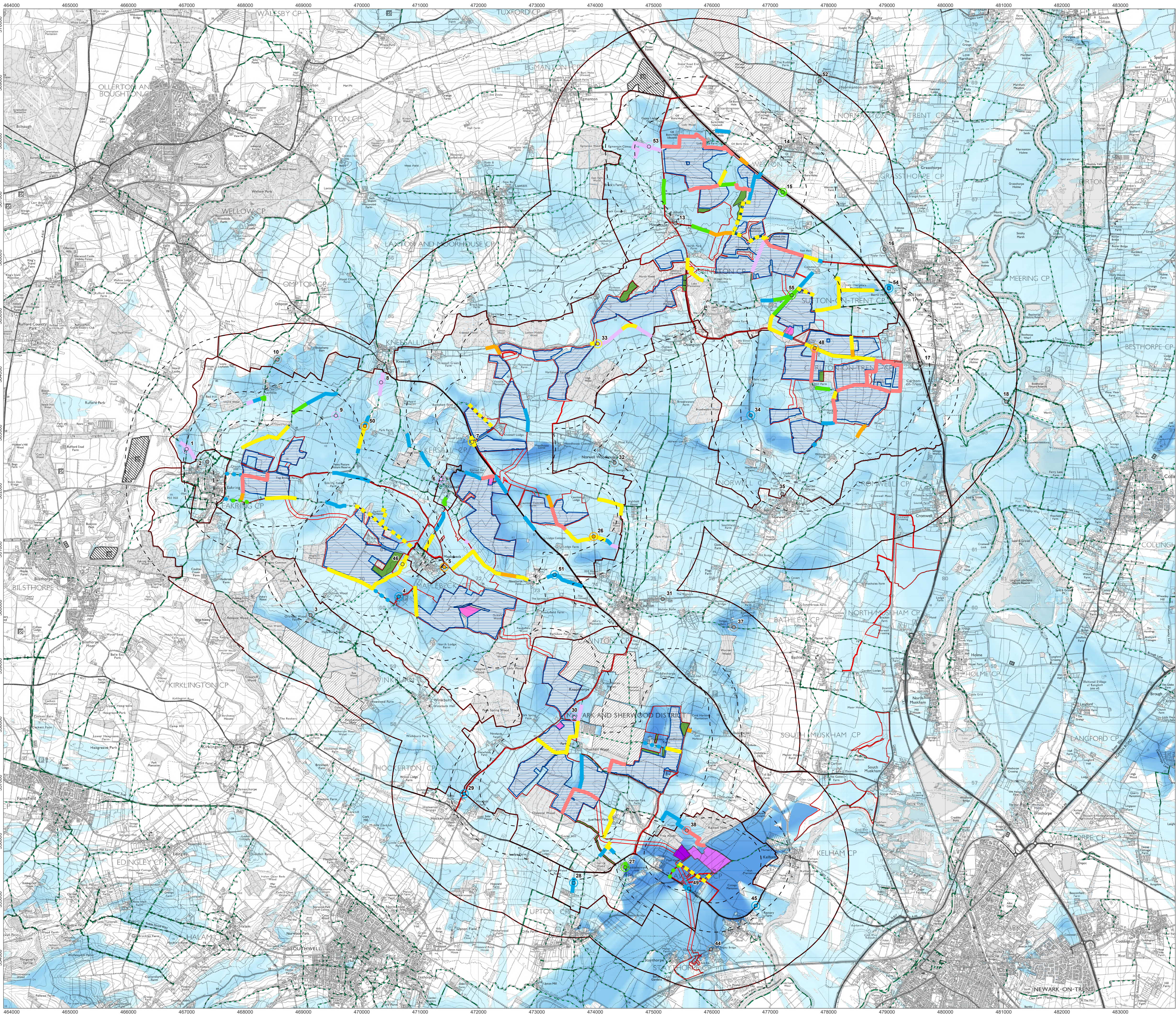
All visual changes are Adverse unless stated otherwise.



ABS-0014-006 v1 | Date: 25/06/2025

**Visual Receptors -
Scale of Change Before Mitigation
Figure 7.6**

**Great North Road Solar and
Biodiversity Park
Environmental Statement**

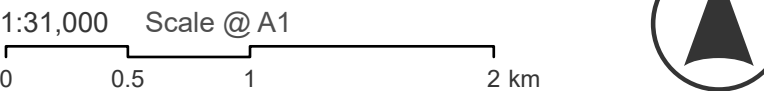


- Proposed Development**
- Solar Areas
 - 400 kV Substation
 - BESS
 - Intermediate Substations
 - Proposed Woodland
 - Order Limits
 - Distance from Solar Arrays, Substations and BESS Area (0.5, 1, 2 km)
 - Visual Receptor Groups
 - Operational Solar Farms
 - Consented Solar Farms
- Public Rights of Way**
- Footpath
 - Bridleway
 - BOAT
 - Restricted Byway
- Viewpoint Scale of Change (After Mitigation)**
- Large
 - Medium
 - Medium Neutral
 - Medium/small
 - Small
 - Small/negligible
 - Negligible
- PRoW Scale of Change (After Mitigation)**
- Large
 - Large/medium
 - Medium
 - Medium Neutral
 - Medium/small
 - Medium/small Neutral
 - Small
 - Small Neutral
 - Small/negligible
- Zone of Theoretical Visibility (BEFORE Mitigation)**
- Greater extent visible
 - Lesser extent visible

NOTES:
The scale of change provides an approximation of the extent and location of views; in reality effects on site may change more gradually (e.g. as a route moves closer to part of the Development in open view) or abruptly (e.g. where the route moves around a woodland and the Development becomes visible).

Where views are mostly screened, but there are occasional open views through field gates or openings, these isolated views are not shown unless they are illustrated by a viewpoint. However, they are described fully within the text.

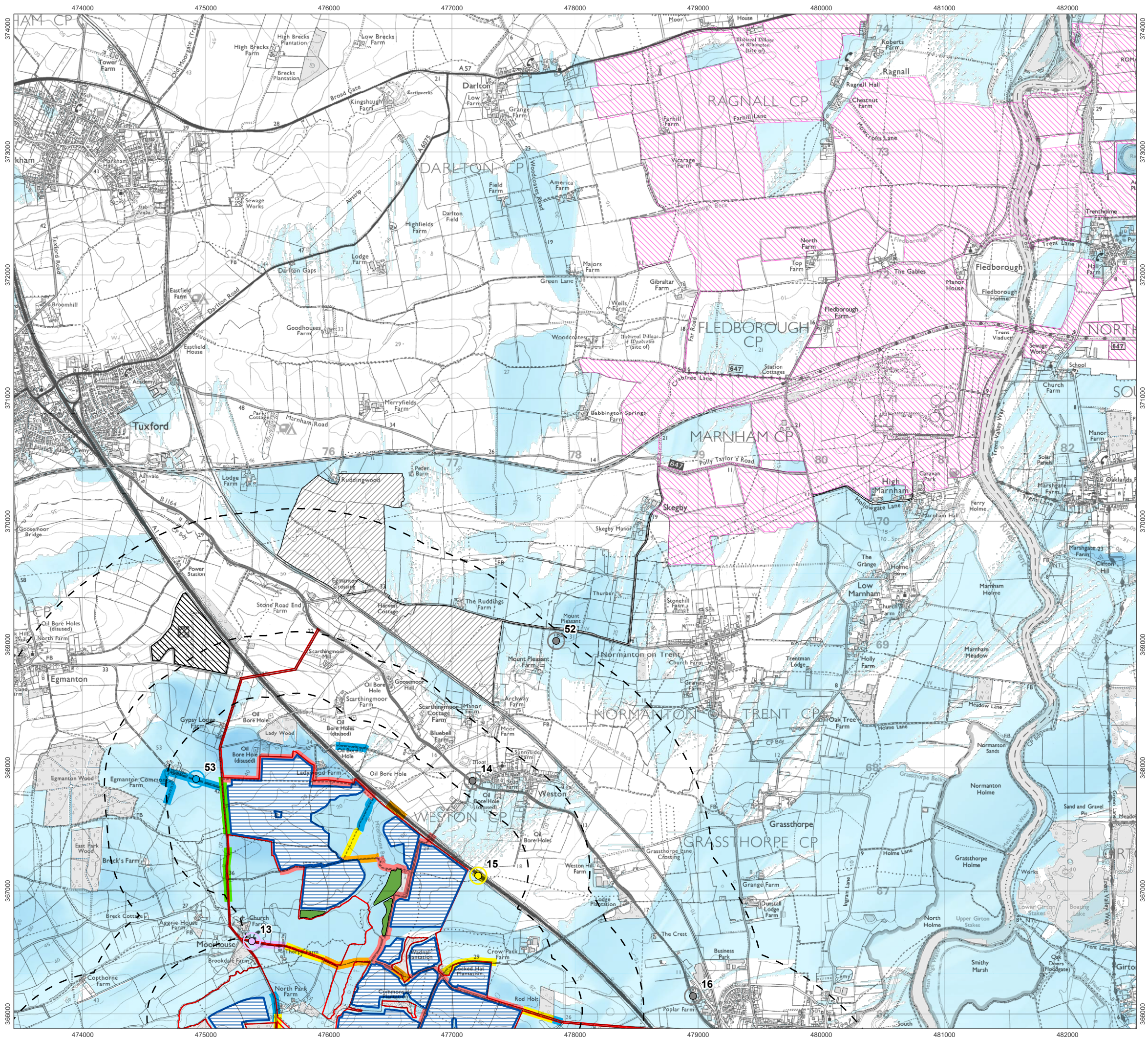
All visual changes are Adverse unless stated otherwise.



ABS-0014-007 v1 | Date: 25/06/2025

**Visual Receptors -
Scale of Change After Mitigation
Figure 7.7**

**Great North Road Solar and
Biodiversity Park
Environmental Statement**



Proposed Development

- Solar Areas
- 400 kV Substation
- BESS
- Intermediate Substations
- Proposed Woodland
- Order Limits
- Distance from Proposed Development

Viewpoint Scale of Change (Pre-Mitigation)

- Large
- Large/medium
- Medium
- Medium/small
- Small
- Small/negligible
- Negligible

PRoW Scale of Change (Pre-Mitigation)

- Large
- Large/medium
- Medium
- Medium/small
- Small
- Small/negligible
- Operational Solar Farms
- Consented Solar Farms
- One Earth Solar Farm

ZTV (Proposed Development)

- Greater extent visible
- Lesser extent visible

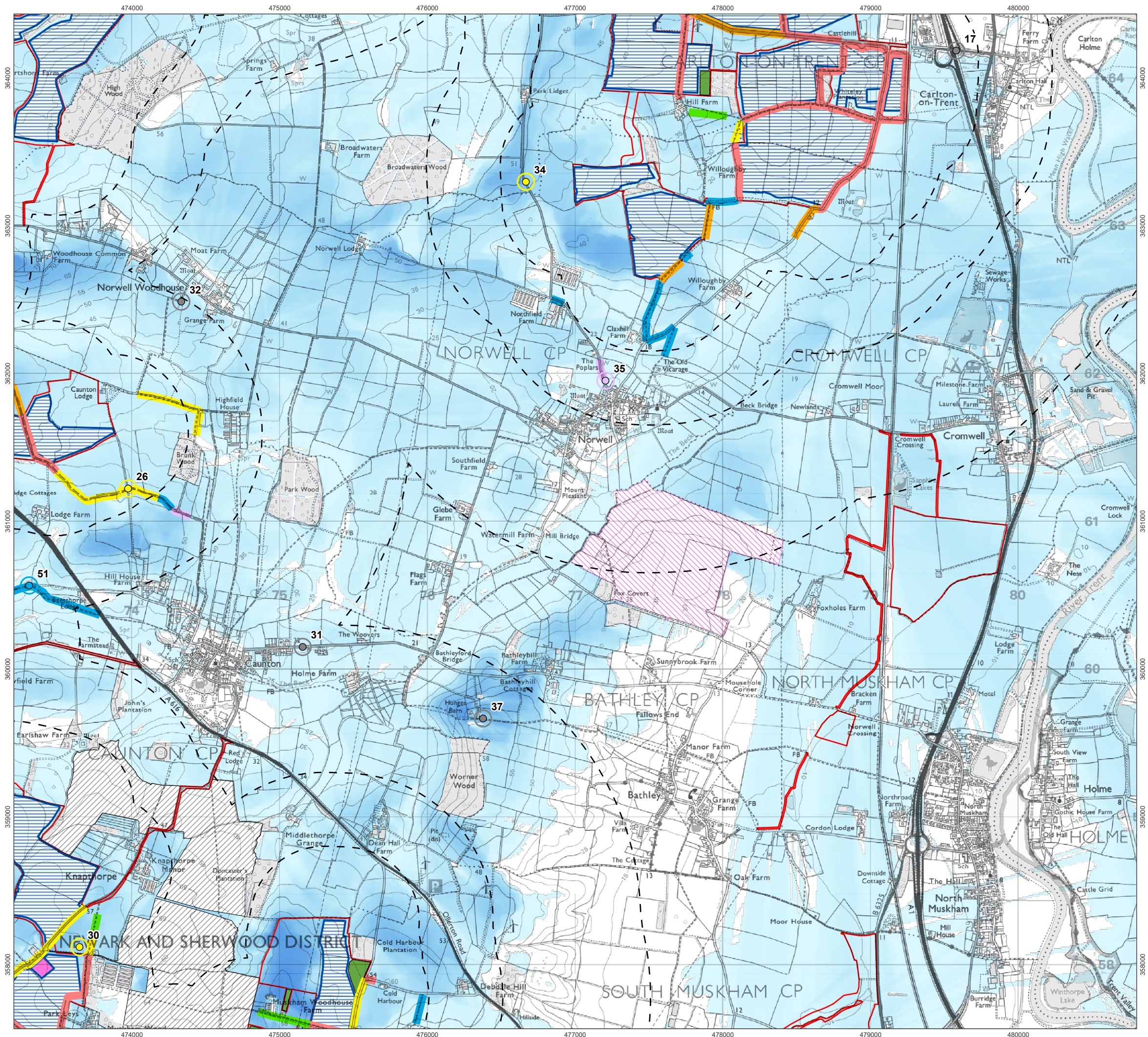
1:30,000 Scale @ A3

0 0.25 0.5 1 km

ABS-0014-008 v1 Date: 25/06/2025

Cumulative Effects with One Earth Solar Farm
Figure 7.8

Great North Road Solar and Biodiversity Park
Environmental Statement



Proposed Development

- Solar Areas
- 400 kV Substation
- BESS
- Intermediate Substations
- Proposed Woodland
- Order Limits
- Distance from Proposed Development

Viewpoint Scale of Change (Pre-Mitigation)

- Large
- Large/medium
- Medium
- Medium/small
- Small
- Small/negligible
- Negligible

PRoW Scale of Change (Pre-Mitigation)

- Large
- Large/medium
- Medium
- Medium/small
- Small
- Small/negligible

Operational Solar Farms

- Consented Solar Farms
- Foxholes Solar Farm

ZTV (Proposed Development)

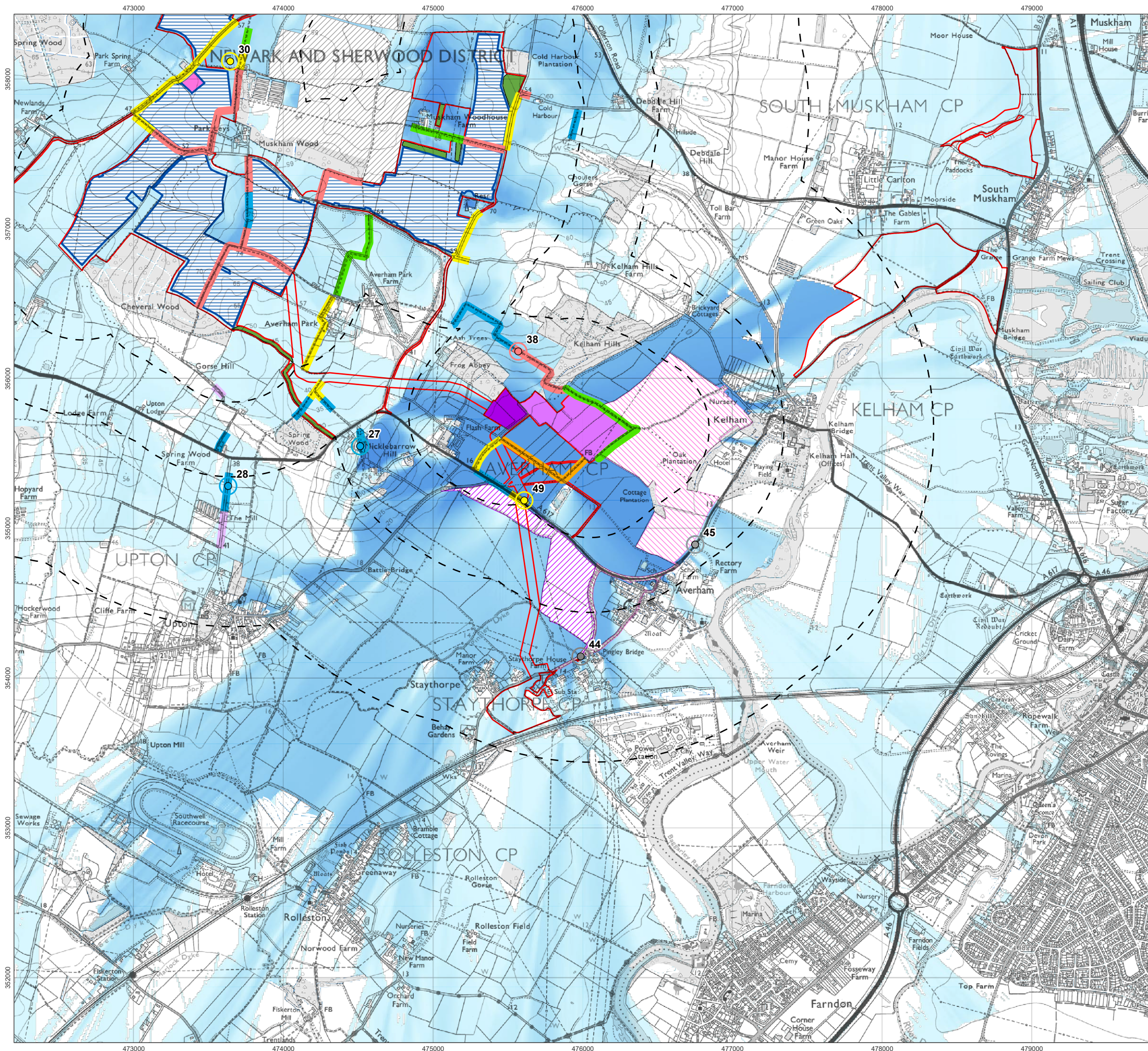
- Greater extent visible
- Lesser extent visible

1:25,000 Scale @ A3

0 0.25 0.5 1 km

ABS-0014-009 v1 Date: 25/06/2025

Cumulative Effects with Foxholes Solar Farm
Figure 7.9



Proposed Development

- Solar Areas
- 400 kV Substation
- BESS
- Intermediate Substations
- Proposed Woodland
- Order Limits
- Distance from Proposed Development

Viewpoint Scale of Change (Cumulative)

- Large
- Large/medium
- Medium
- Medium/small
- Small
- Small/negligible
- Negligible

PRoW Scale of Change (Cumulative)

- Large
- Large/medium
- Medium
- Medium/small
- Small
- Small/negligible

Operational Solar Farms

- Consented Solar Farms
- Kelham Solar Farm
- SSE BESS

ZTV (Proposed Development)

- Greater extent visible
- Lesser extent visible

1:25,000 Scale @ A3

0 0.25 0.5 1 km

North Arrow

ABS-0014-010 v1 Date: 25/06/2025

Cumulative Effects with Kelham Solar Farm and SSE BESS
Figure 7.10

Great North Road Solar and Biodiversity Park
Environmental Statement